

Independent Lodge

The same services as the Lodge, except:

- Night-checks are not performed
- Breakfast and dinner are optional purchases at an additional charge (suites contain kitchenettes)
- All laundry services are purchased at an additional charge
- Bulk Shaw TV package added to rent

Other Housing Options

Independent Living

Rent in our independent, 65+, self-contained apartments is subsidized (rent -geared-to-income). Facilities include common areas, laundry facilities, and limited parking.



Affordable Living

Rent in our 65+, bungalow-style affordable living apartments is a base rent below market value. Located in Wabamun, the suites include in-suite laundry and parking.

Coming Soon...

A new 55+ affordable housing complex will be constructed in Stony Plain. Construction is currently slated for completion in early 2021.

Our Mission

To provide and manage independent, supportive and affordable housing to seniors, individuals and families thereby creating an inclusive community.

Donations

As both a non-profit and a federally registered charity, Meridian Housing Foundation is always grateful for donations made to support our services.

Donations can be made in person at the Meridian Housing Foundation Administrative Offices or online at:

www.meridianhousingfoundation.ca

Registered Charity No. 10769 1651 RR0001

Meridian Housing Foundation

Administration Office
5303-47th Street
Stony Plain, AB
T7Z 1P1

Ph: 780-963-2149 Fax: 780-963-0923
Email: admin@meridianfoundation.ca



Lodge Services



Community

Quality Care

Safe Environment

Integrity

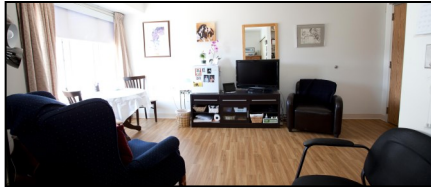
Compassion



Your Home of Choice

Rent

Meridian Housing Foundation's Board of Directors reviews rents annually within the guidelines established by the Government of Alberta.



Personal Care

Personal care services such as dressing, bathing or eating assistance are not provided.

Services are available through the Home Care program for qualified applicants.

Medication

Meridian Housing Foundation participates in the Medication Assistance Program (MAP) in cooperation with Home Care and local area pharmacists.

Residents interested in participating in MAP can contact Home Care for details.

Transportation

Residents are responsible for arranging their own transportation.

Parking

Limited powered parking stalls are available for a monthly fee.

Food Services

Residents are provided three meals and three coffee/snack breaks daily.



Menus are planned in advance and in consultation with a nutritionist for healthy meal choices.

The Foundation does not provide individual meal planning or monitoring.

Housekeeping

Basic room cleaning, bedding changes and fresh towels are provided weekly.

Optional laundry service for clothing is an additional monthly charge. Ironing services are not provided.

Free-to-use laundry rooms are available; residents need only provide their own laundry detergent.

Social Activities

Optional activities for all residents are hosted at Whispering Waters Manor.

Activities include cards, games, bingo, exercises, live music, events and more!



Cable TV / Telephone

Residents subscribe to the service provider directly.

Security

All reasonable measures to safeguard the safety and security of residents are taken by the Foundation, including 24 hour staffing, night checks, and alarmed security doors at night.

Residents are free to come and go as they please, and engage in any activities in the privacy of their room provided that it is in keeping with Meridian Housing Foundation policy, does not infringe upon the rights of others, nor risk damage to the building.

The Foundation does not guarantee to individually monitor or supervise residents.

Medical Equipment

Respiratory aids can be used in resident rooms and common areas except where prohibited for reasons of safety and emergency access.

Any modification to a room (e.g. handrails) and larger personal mobility devices (e.g. wheelchair, or scooter) must be approved in advance by the Foundation.